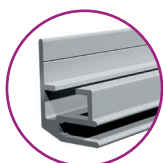


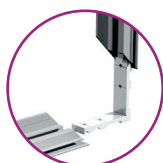
# Frame | Profil 20 mm

Rectangular frame is a thin and subtle profile which can be a smart wall decoration.

- Profile used for wallframes
- It's only 20 mm thick
- There is no need to buy additional bracket for this frame. Thanks to especially designed wing where it is possible to make a hole for rawlplugs



Aluminum profile  
20 mm



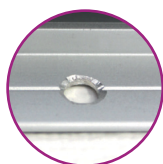
Composed with  
squares



Numbered  
elements



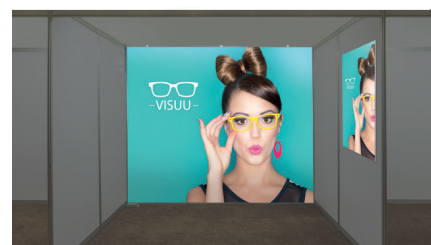
Hook for frames to  
hang it on partial  
wall without use of  
screws



Holes for screws



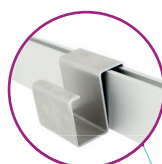
Graphic can be mounted  
thanks to edges of silicone



## Technic details:

- Anodized Aluminum
- Weight per metre 0,317 kg.
- Size 27 x 20 mm.
- If the frame will be used as stand it needs additional stiffenings.
- Graphic is installed in frame thanks to 3 mm sew of silicone.
- Elements of frame can be composed thanks to squares which has a screw-in mouting system.

## Two possibilities of installation



Wall hook

Partial wall



Installed with hooks

Installed with  
rawlplugs



Installed with rawlplugs

## Transport

### Plastic tube

Adjustable tube for transport made of lightweight plastic.

↗ (H) x (Ø) mm  
770 – 1250 x 115



### Transport bag

Transport bag for graphic with cardboard tube. Available in few sizes.

↗ (H) x (Ø) mm  
850 – 1850 x 150




Do you want to prepare your exhibition stand?  
Do it with our advices to avoid any problems!

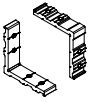


Now you can use the frame whenever you need to!


Legend



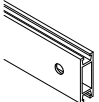
Profil  
20 mm



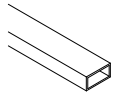
90° Profiles connector




Profiles connector I



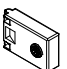
Connecting profile I



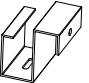
Connecting profile II




Profiles connector II



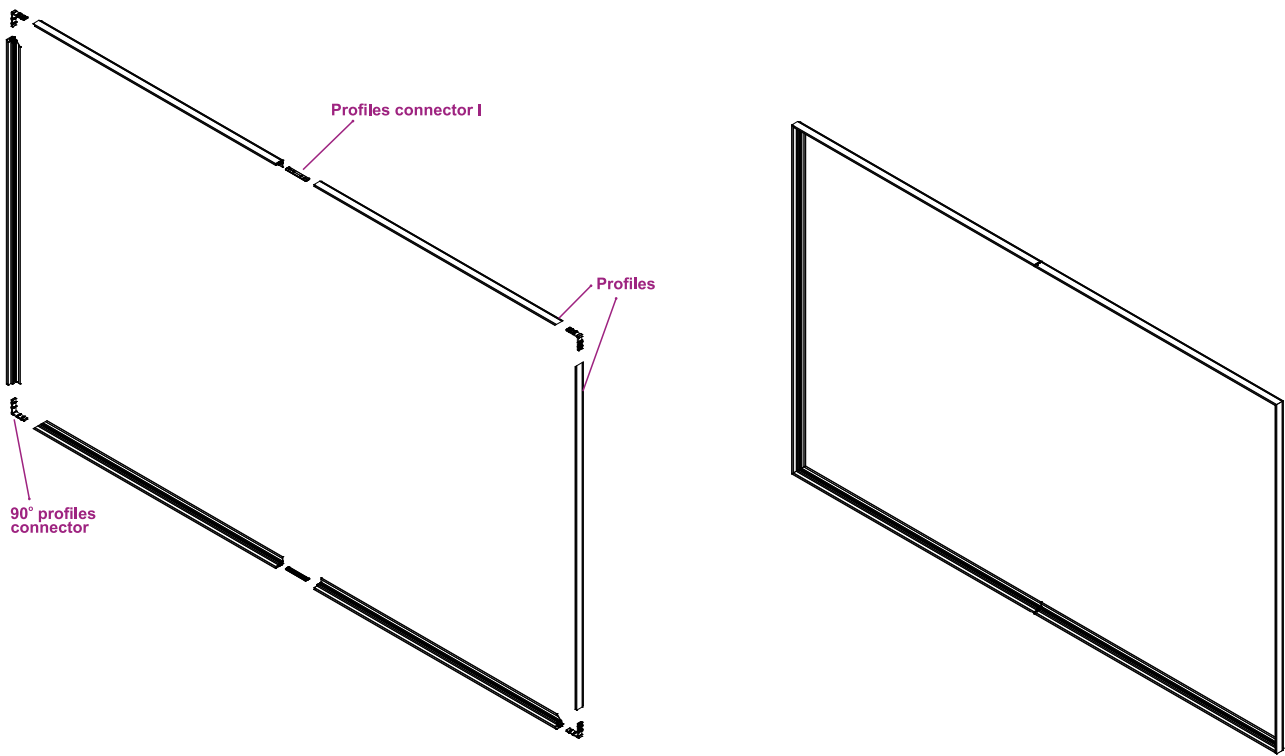
Perpendicular profiles connector



Hook

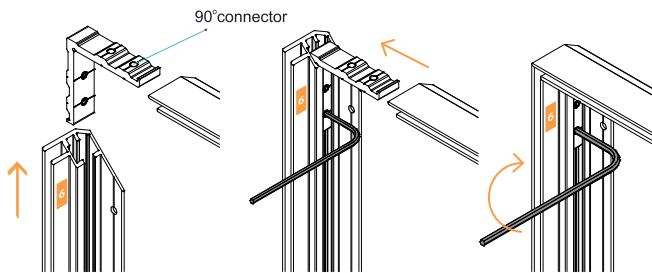


Accessories set  
The package contains manuals,  
gloves, set of Allen keys.

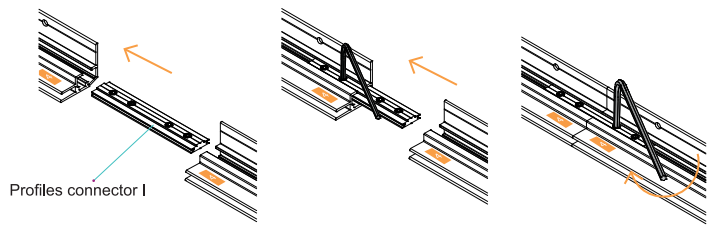


Installation of wallframe

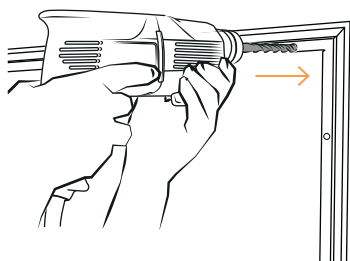
1 How to connect the profiles with 90° connector.



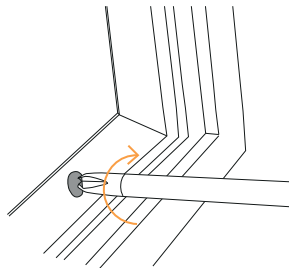
2 How to connect the profiles with Profiles connector I



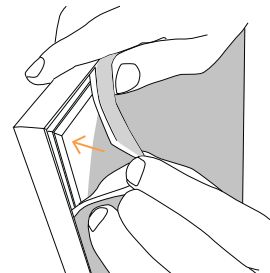
3 During prodction process we make holes every 50 cm by drill.



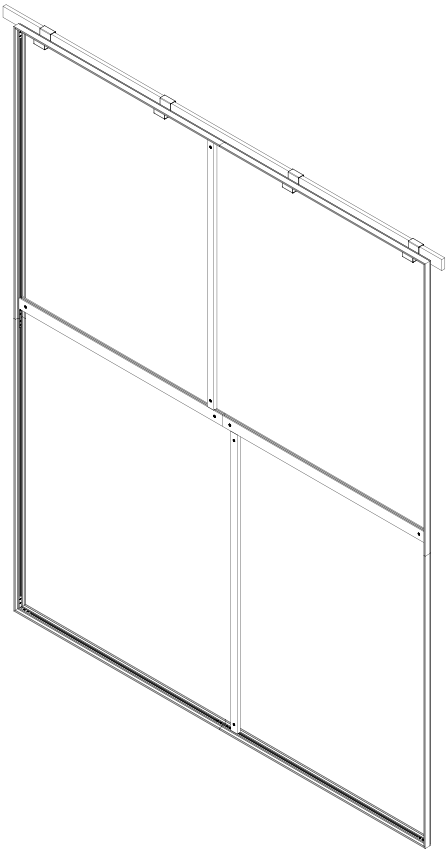
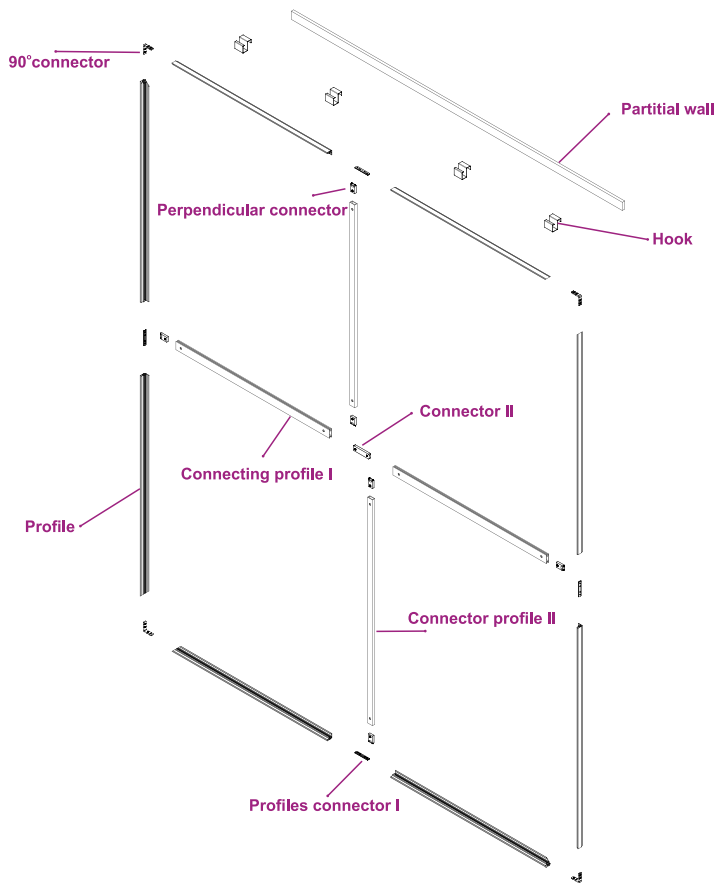
4 The frame can be installed only with screws..



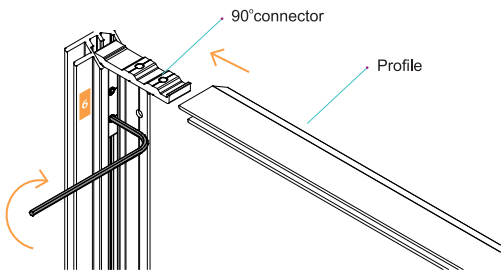
5 Fabric is sewed with silicone. It needs to be mounted in frame. The installation should be started by corners and then put all the silicone sew on sides.



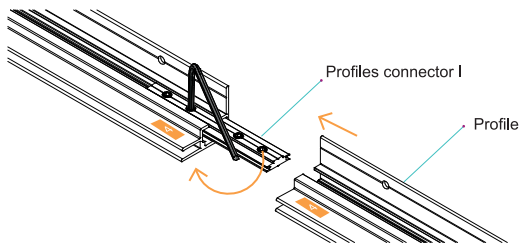
Wall frame installation on hooks



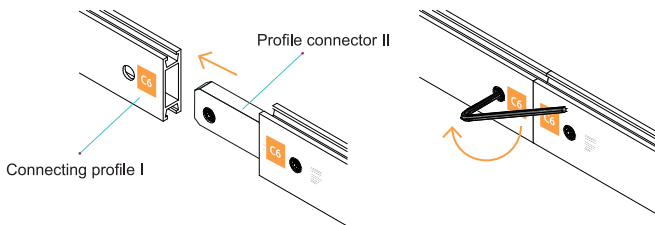
1 How to connect the profiles with 90° connector.



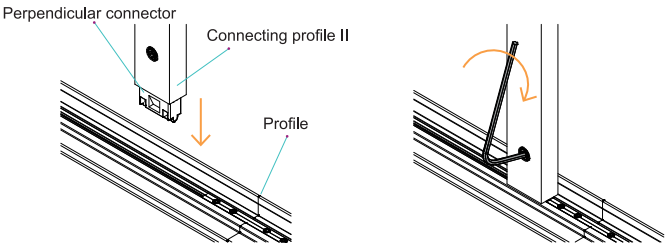
2 How to connect the profiles with Profiles connector I



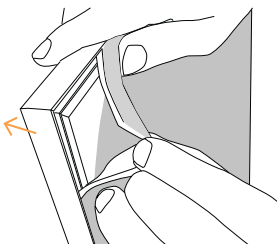
3 The bigger frames need additional connecting profiles. Installation of Connecting Profiles.



4 The bigger frames need additional connecting profiles. Installation of Connecting profiles II.



5 Fabric is sewed with silicone. It needs to be mounted in frame. The installation should be started by corners and then put all the silicone sew on sides.



6 The hook should be mounted first on partial wall and next the frame should be hung on it.

